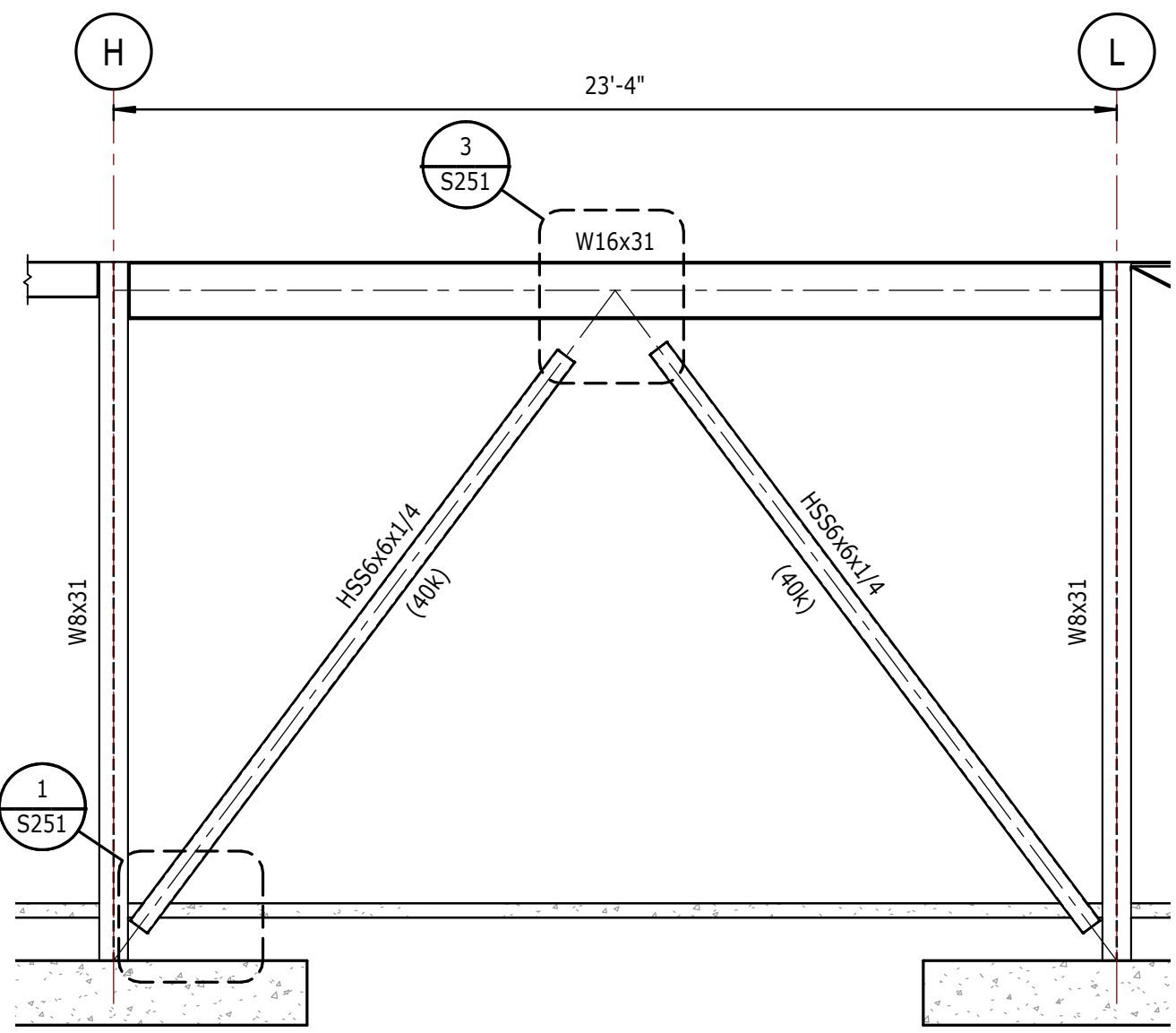
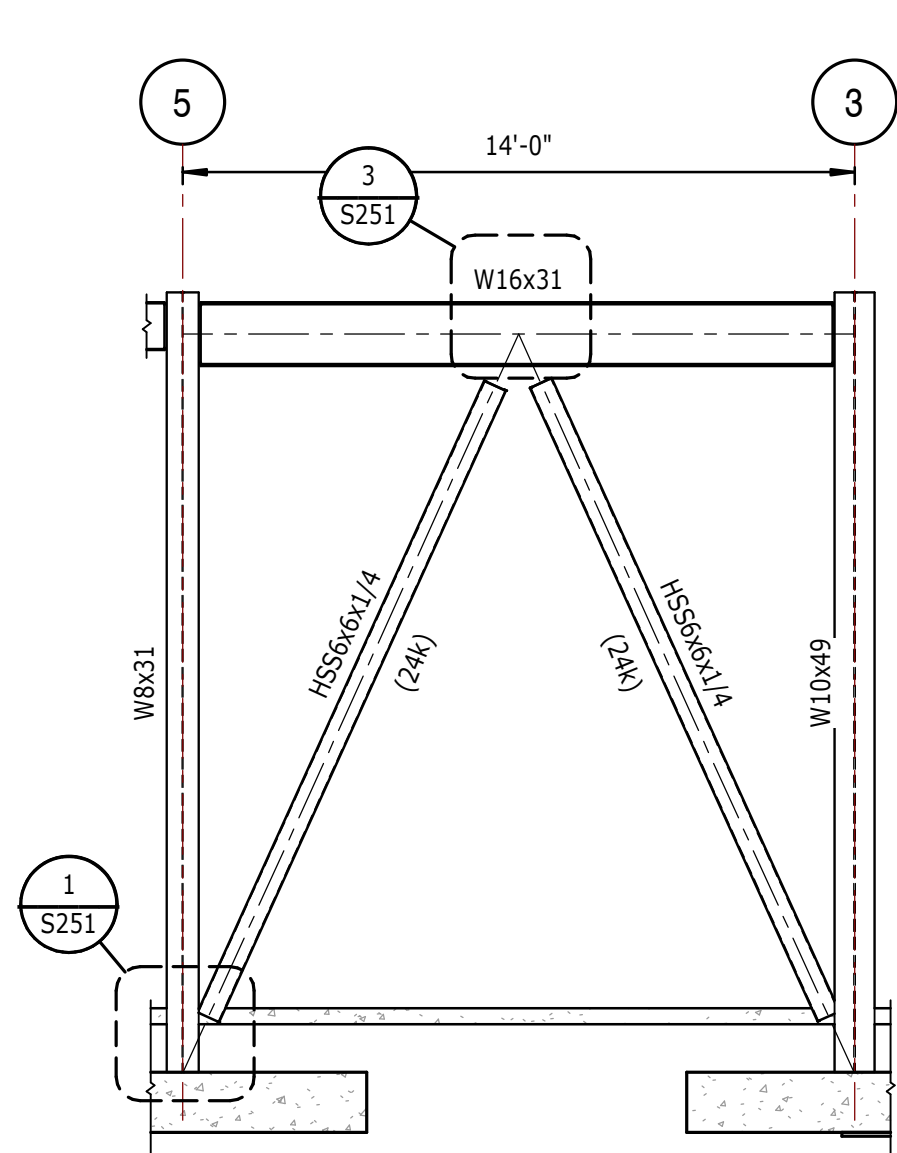


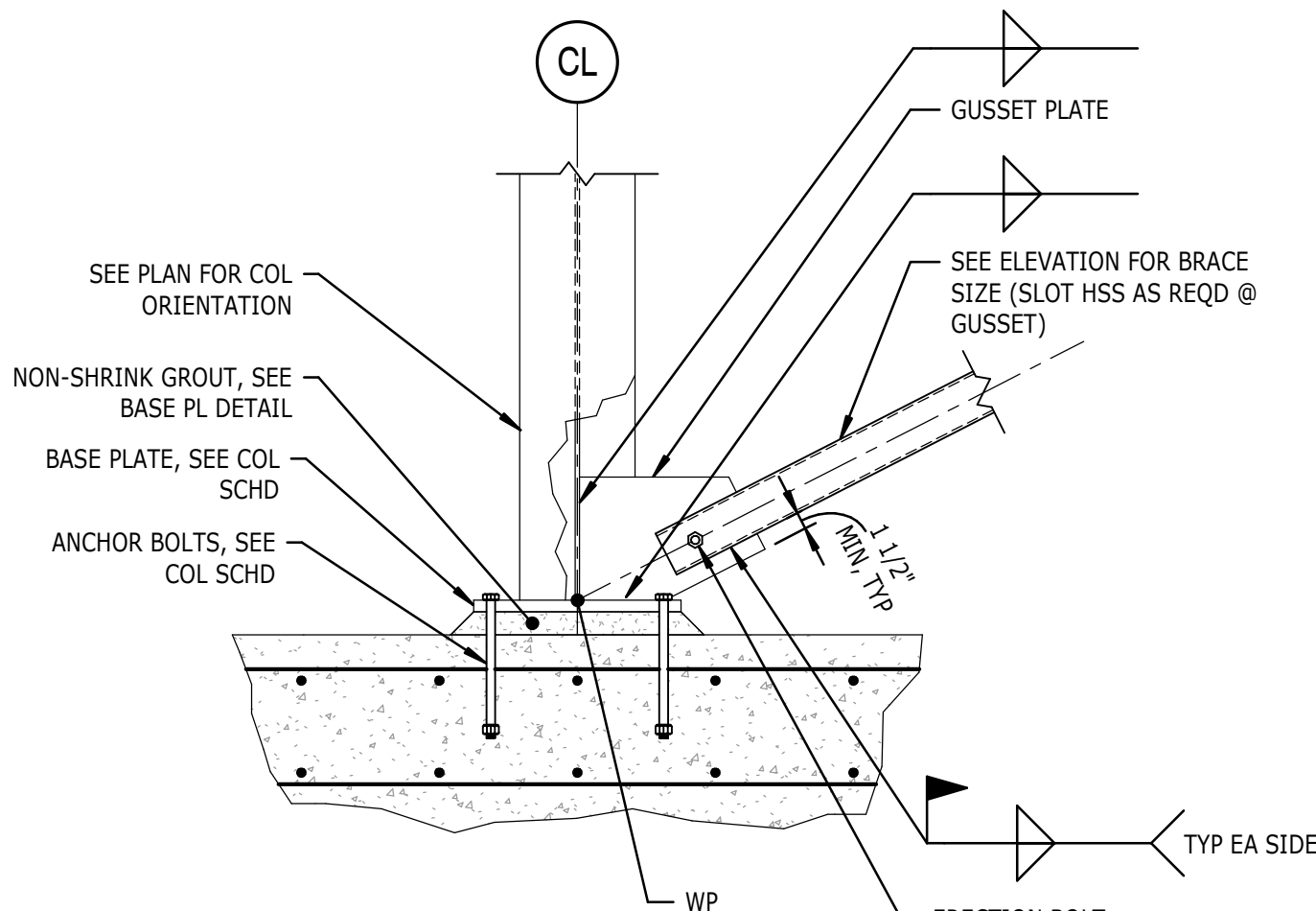
17 VERTICAL FRAME 14-1
S251 1/4" = 1'-0"



13 VERTICAL FRAME 8-1
S251 1/4" = 1'-0"

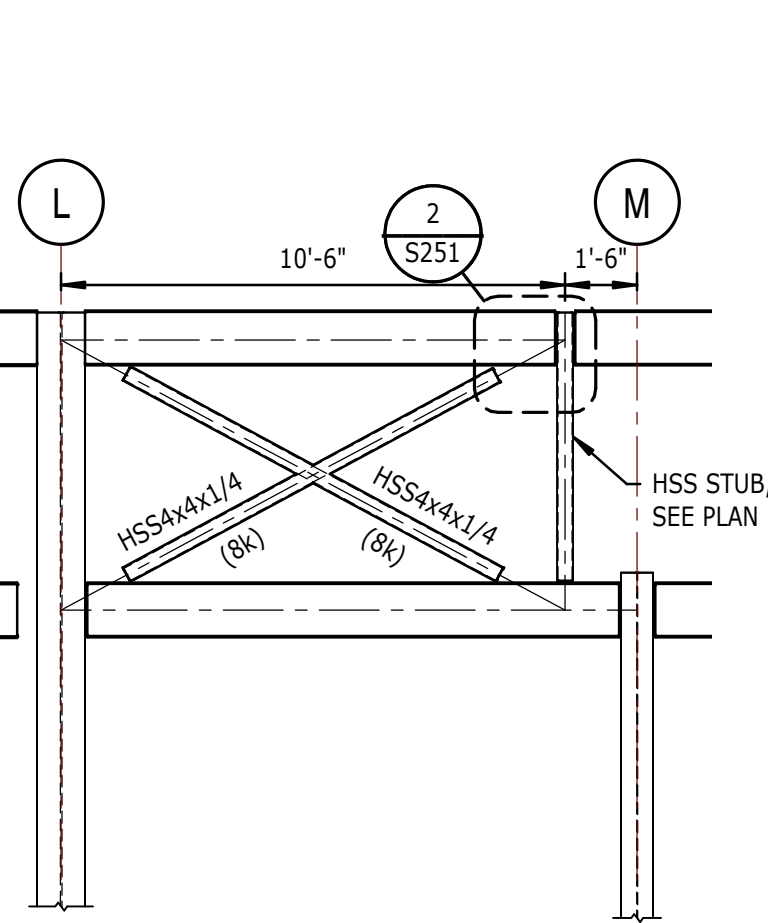


9 VERTICAL FRAME G-1
S251 1/4" = 1'-0"

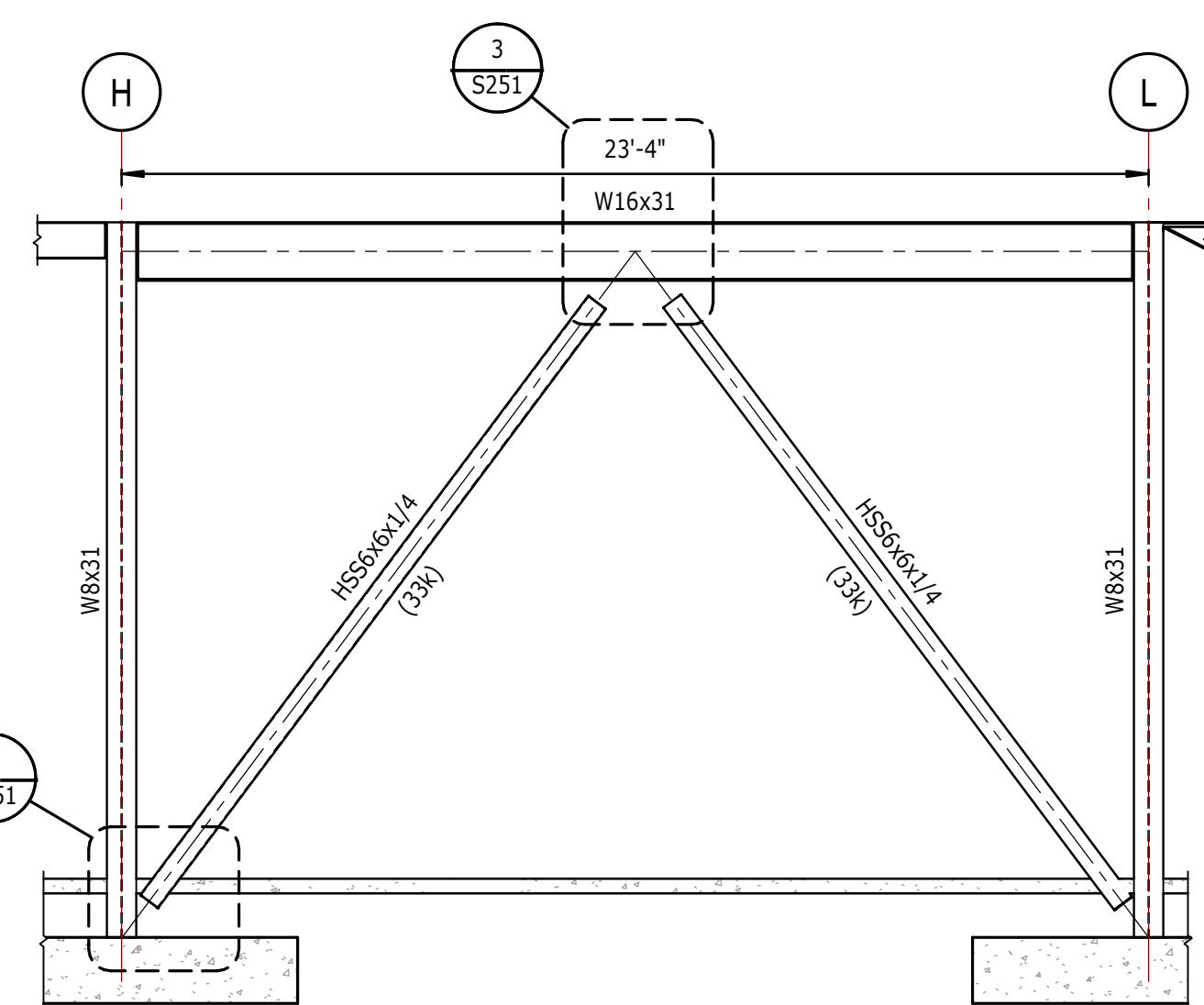


NOTES:
1. FABRICATOR SHALL DESIGN ALL BEAM TO COLUMN CONNECTIONS, GUSSET PLATES, AND WELDS WITHIN VERTICAL FRAME TO SUPPORT THE HORIZONTAL AND VERTICAL COMPONENTS OF THE BRACE FORCE PLUS THE BEAM REACTION SHOWN ON THE ELEVATION. ALLOWABLE STRESS INCREASES OR LOAD REDUCTIONS ARE NOT PERMITTED. THIS PROJECT HAS AN R-3 AND MUST MEET AISC SEISMIC DESIGN REQUIREMENT. CONNECTIONS MUST BE DESIGNED FOR THE STRENGTH OF THE MEMBER + FACTORS.

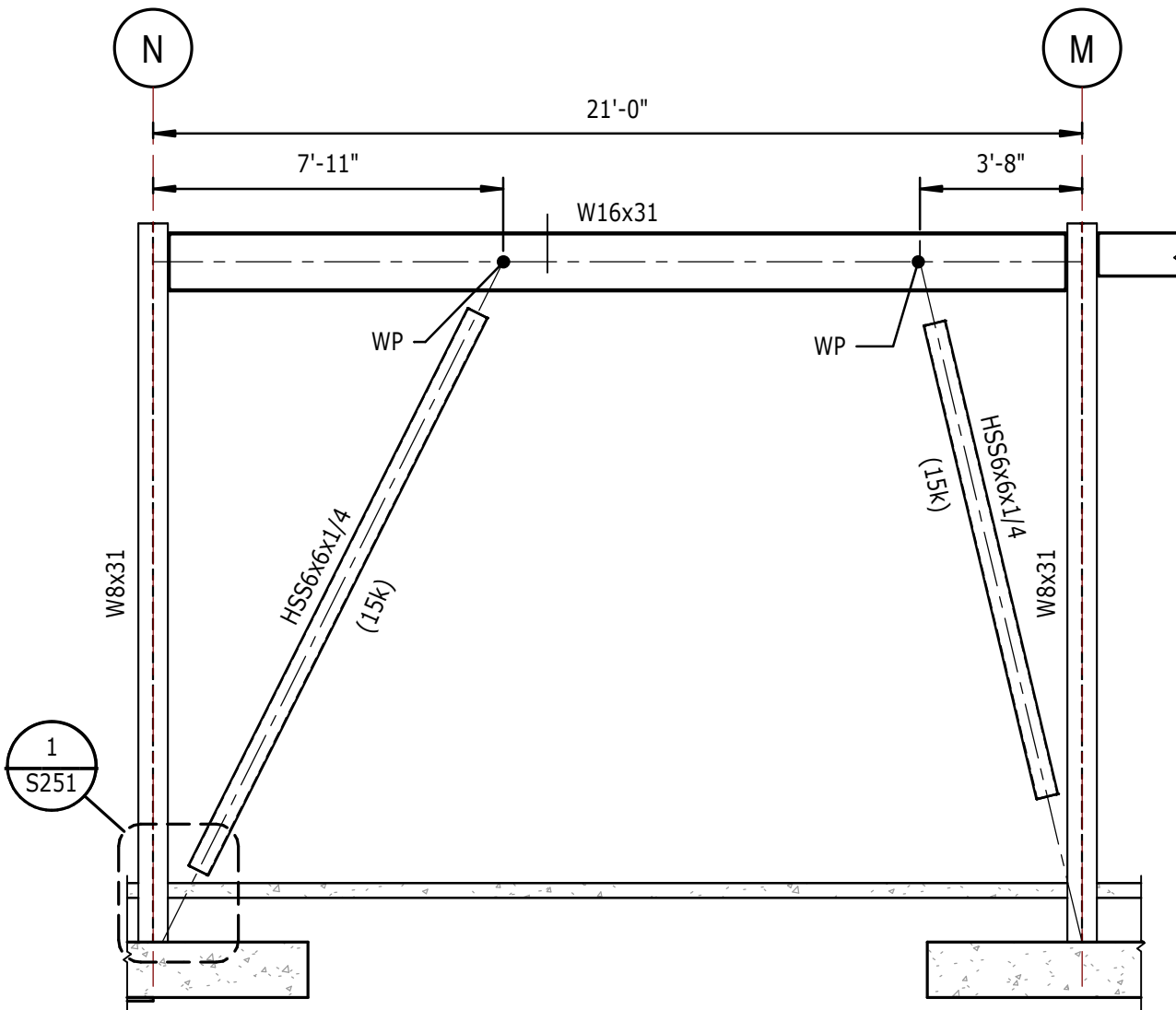
1 TYPICAL BRACE CONNECTION AT BASE
S251 3/4" = 1'-0"



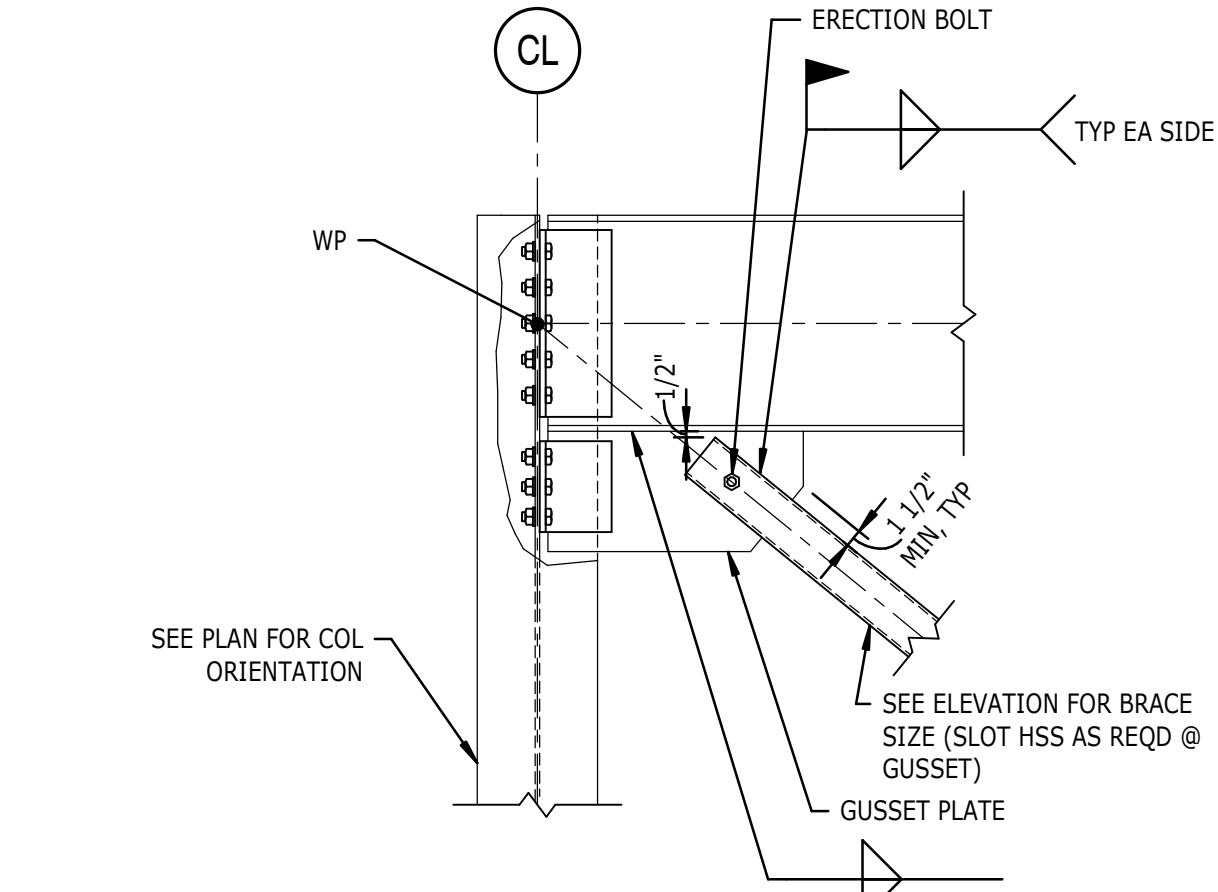
18 VERTICAL FRAME 14-2
S251 1/4" = 1'-0"



14 VERTICAL FRAME 9-1
S251 1/4" = 1'-0"

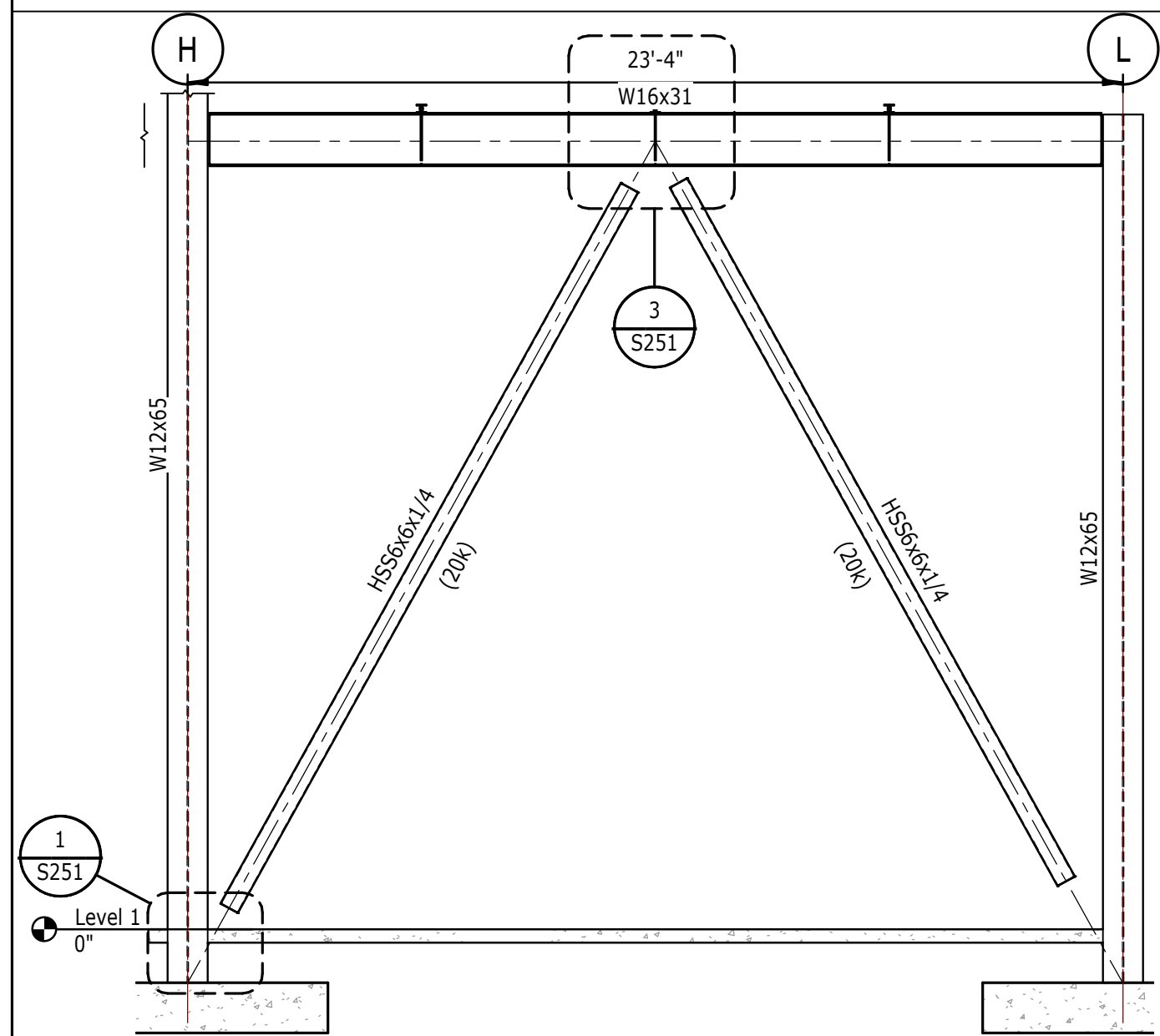


10 VERTICAL FRAME 6-1
S251 1/4" = 1'-0"

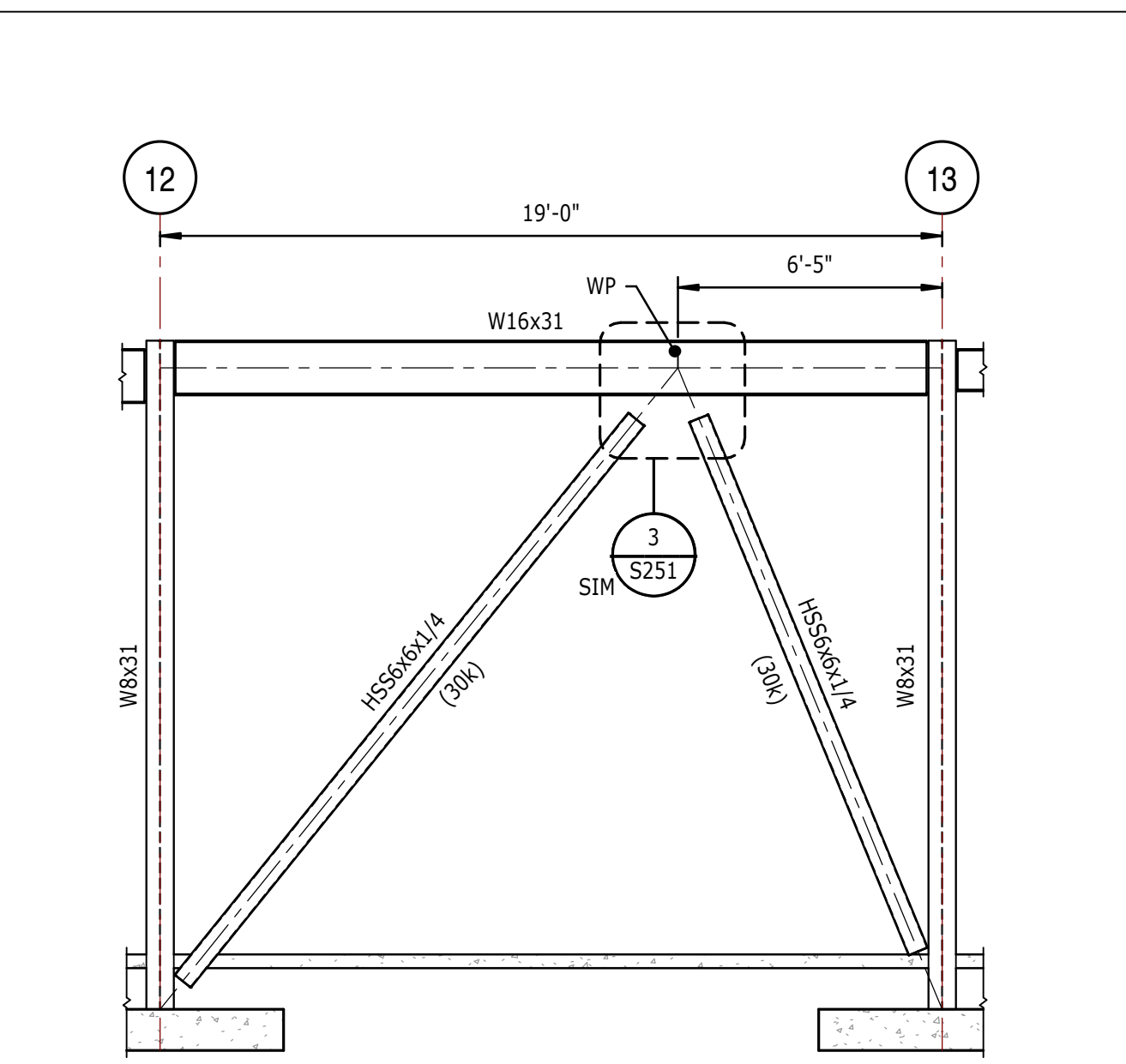


NOTES:
1. FABRICATOR SHALL DESIGN ALL BEAM TO COLUMN CONNECTIONS, GUSSET PLATES, AND WELDS WITHIN VERTICAL FRAME TO SUPPORT THE HORIZONTAL AND VERTICAL COMPONENTS OF THE BRACE FORCE PLUS THE BEAM REACTION SHOWN ON THE ELEVATION. ALLOWABLE STRESS INCREASES OR LOAD REDUCTIONS ARE NOT PERMITTED. THIS PROJECT HAS AN R-3 AND MUST MEET AISC SEISMIC DESIGN REQUIREMENT. CONNECTIONS MUST BE DESIGNED FOR THE STRENGTH OF THE MEMBER + FACTORS.

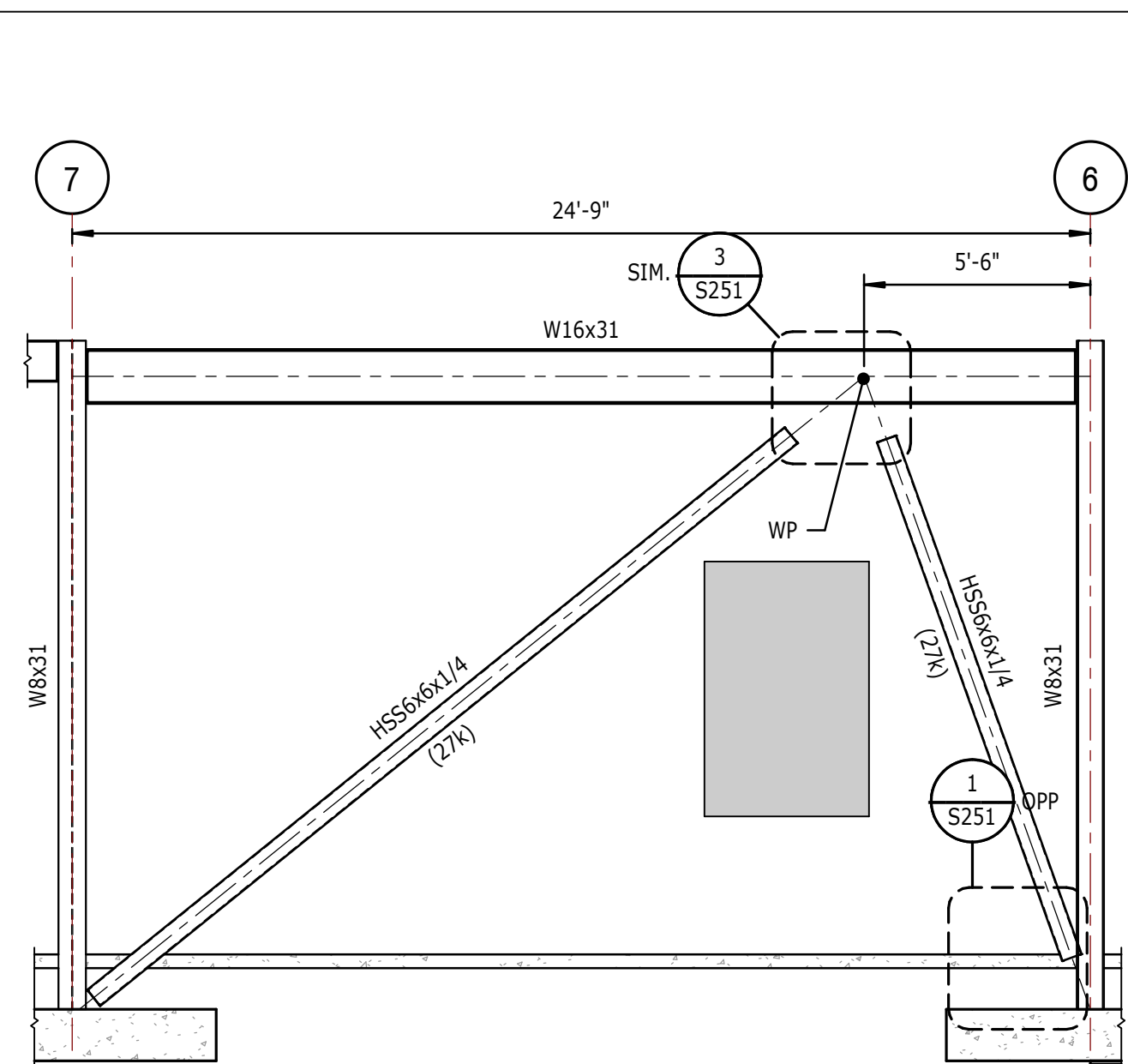
2 TYPICAL BRACE CONNECTION AT BEAM
S251 3/4" = 1'-0"



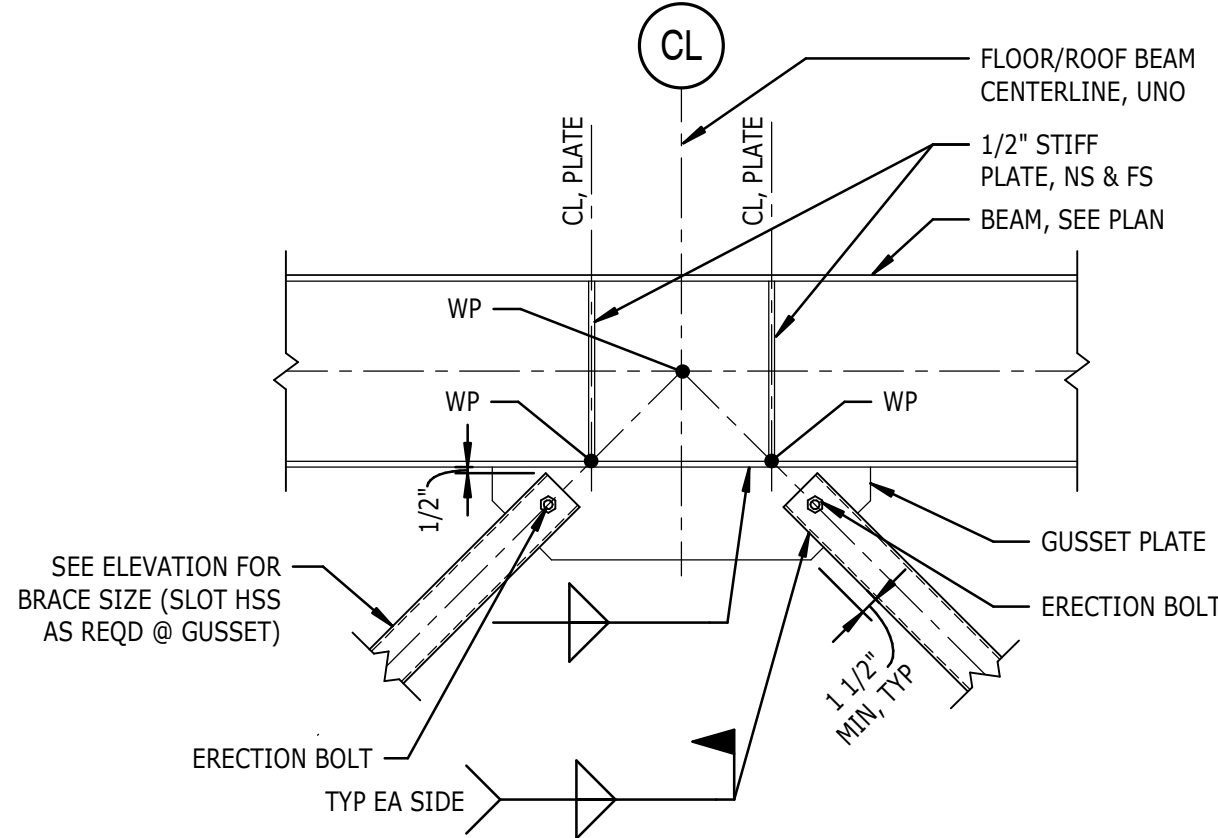
19 VERTICAL FRAME 15-1
S251 1/4" = 1'-0"



15 VERTICAL FRAME A-1
S251 1/4" = 1'-0"



11 VERTICAL FRAME N-1
S251 1/4" = 1'-0"



NOTES:
1. FABRICATOR SHALL DESIGN ALL BEAM TO COLUMN CONNECTIONS, GUSSET PLATES, AND WELDS WITHIN VERTICAL FRAME TO SUPPORT THE HORIZONTAL AND VERTICAL COMPONENTS OF THE BRACE FORCE PLUS THE BEAM REACTION SHOWN ON THE ELEVATION. ALLOWABLE STRESS INCREASES OR LOAD REDUCTIONS ARE NOT PERMITTED. THIS PROJECT HAS AN R-3 AND MUST MEET AISC SEISMIC DESIGN REQUIREMENT. CONNECTIONS MUST BE DESIGNED FOR THE STRENGTH OF THE MEMBER + FACTORS.
2. "WP" INDICATES WORK POINT FOR MEMBER CENTROIDS.

3 TYPICAL BRACE CONNECTION AT BEAM
S251 3/4" = 1'-0"